

General information:

The Oventrop button type gauge cock is suitable for the connection of pressure gauges with connection spigots Rp 1/2 or according to DIN EN 837-1: 1997-02.

The pressure gauge and the system are separated with the help of the gauge cock. System connection is achieved by pressing the button of the gauge cock. System separation is automatically achieved by releasing the button. In this position, the pressure gauge is depressurised.

Item no.: 1110504 (DN 15)

Technical data:

Type: 111 05
Size: DN 15
Body: Brass (CW617N), nickel plated
Connections: Female thread Rp 1/2 according to EN 10226 (outlet port also correspond to pressure gauge threaded bore according to DIN EN 837-1)
Direction of flow: See arrow on the body
Fluid gas: Gas according to DVGW work sheet G260-1
Operating pressure: MOP 5
Ambient temperature: -20 °C up to +60 °C
Tightness class: Class 1
Approvals: DVGW-G tested and certified according to DVGW-VP 308



Fluid water: For heating and cooling
Max. operating pressure p_S: 25 bar (PN 25)
Operating temperature t_S: (-10 °C) 0 °C up to +90 °C (prevent formation of ice)

Installation:

The button type pressure gauge has to be installed in the direction of flow with due consideration of the arrow on the body. A suitable flat seal according to the requirements of DIN EN 837-3 (old: flat seal form B DIN 16285) has to be installed between the gauge cock and the pressure gauge.

Alternatively, the pressure gauge can be tightly screwed into the gauge cock with a suitable thread sealant.

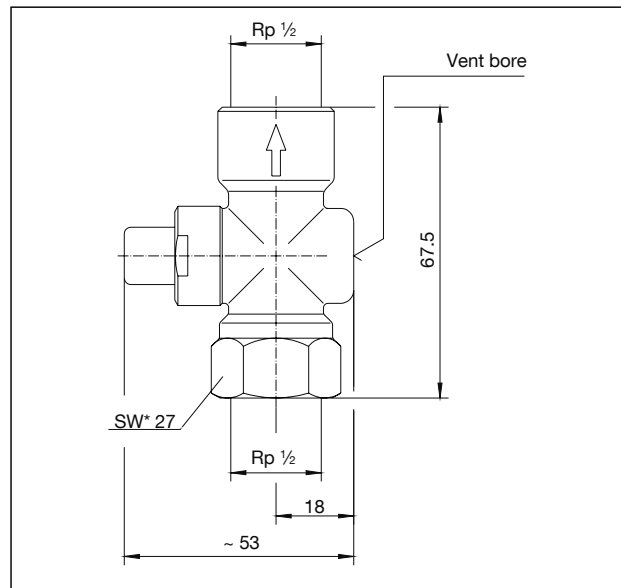
The approved rules of technology (e.g. TRGI) must be observed.

Operation and maintenance:

The gauge cock is opened by pressing the button and the connected pressure gauge is pressurised. The pressure can be read off.

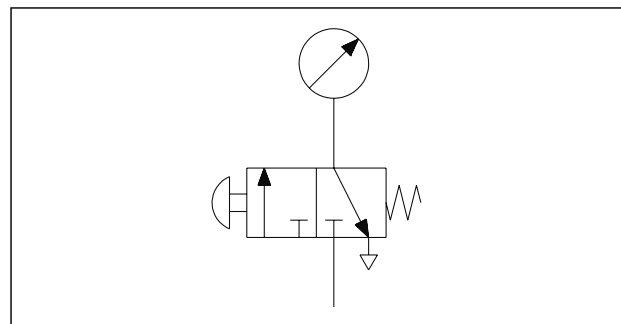
By releasing the button, the gauge cock and the pressure gauge connection are closed respectively the pressure gauge is depressurised. A small quantity of the fluid may escape from the vent bore.

The gauge cock is maintenance-free.



Dimensions

*SW = Spanner size



Switching scheme

Subject to technical modifications without notice.

Product range 6
 ti 170-EN/10/MW
 Edition 2017